



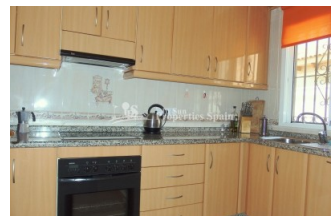
REF: # 3957

ORIHUELA COSTA (VILLAMARTIN GOLF )



#### INFO

PRICE:	425.000 €
PROPERTY TYPE:	Villa
CITY:	Orihuela Costa (Villamartin Golf )
BEDROOMS:	4
Bathrooms:	2
Build ( m2 ):	140
Plot ( m2 ):	500
Terrace ( m2 ):	24
Year:	2000
Floor:	-
Old price	-




#### DESCRIPTION

A lovely and totally modernized 4 bedroom 2 bathroom, south facing Detached Villa located in TORRE ESTRELLA- SAN MIGUEL DE SALINAS on a 500m2 plot. The property benefits from 4 double sized bedrooms all with fitted wardrobes. Large lounge/dining area with gas fireplace and a closed fully equipped kitchen, glazed terrace with wonderful salt lake views. Central gas heating, 35 m2 garage. Outside the villa benefits from a beautiful well stocked and easy to maintain garden with a private swimming pool and Jacuzzi ,large terrace areas. Fully walled and private plot with electric entrance gates and driveway for parking (2 cars). Sold fully furnished. Close to all amenities in San Miguel town, just 8 km to the sandy beaches of Mil Palmeras and surrounded by 4 top quality 18 hole golf courses.

#### ENERGETIC CERTIFIED



STYLE	VIEWS	DISTANCE TO :	ORIENTATION
<ul style="list-style-type: none"> <li>Mediterranean</li> </ul>	<ul style="list-style-type: none"> <li>Panoramic views</li> <li>Sea views</li> <li>Mountain views</li> </ul>	Beach : 8 Km Airport: 40 Km Town center : 2 Km	South west
FURNITURE	PARKING	TAX	MAIN LIVING AREA
<ul style="list-style-type: none"> <li>Furnished</li> </ul>	Garage no Cars : 1 Parking no Cars: 2	I.B.I : 425 €	<ul style="list-style-type: none"> <li>Storage</li> </ul>
FLOORING	KITCHEN	GARDEN AND TERRACES	HEATING
<ul style="list-style-type: none"> <li>Tile floors</li> <li>Stone floors</li> </ul>	<ul style="list-style-type: none"> <li>Closed kitchen</li> <li>Equipped kitchen</li> <li>Granite countertop</li> </ul>	<ul style="list-style-type: none"> <li>Covered terrace</li> <li>Open terrace</li> <li>Exterior lights</li> <li>Automatic watering system</li> <li>Palm trees</li> <li>Landscaped</li> <li>Fenced</li> <li>Stone walls</li> <li>BBQ/grill</li> <li>Private garden</li> </ul>	<ul style="list-style-type: none"> <li>Central gas heating</li> <li>Fireplace gas</li> </ul>
EXTRA	ENERGETIC CERTIFIED		
<ul style="list-style-type: none"> <li>Outdoor jacuzzi</li> <li>Built in wardrobes</li> <li>Reinforced door</li> <li>Double glazed windows</li> <li>Satellite TV</li> <li>Storage room</li> <li>Internet</li> </ul>	 <p>The image shows a vertical energy efficiency scale with seven horizontal bars labeled A through G. Bar A is dark green, B is green, C is light green, D is yellow, E is orange-yellow, F is orange, and G is red. To the right of these bars is a vertical green bar with the text 'IN PROGRESS' written vertically inside it.</p>		

**"OUR EXPERIENCE IS YOUR GUARANTEE"**