



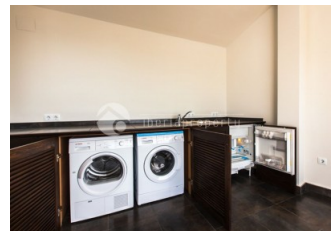
REF: # 3229

ALTEA (ALTEA LA VELLA)



#### INFO

PRICE:	645.000 €
PROPERTY TYPE:	Townhouse
CITY:	Altea (Altea La Vella)
BEDROOMS:	3
Bathrooms:	3
Build ( m2 ):	240
Plot ( m2 ):	-
Terrace ( m2 ):	-
Year:	2012
Floor:	3
Old price	-



#### DESCRIPTION

This modern townhouse in the pretty town of Altea la Vella, has been designed according to the German building standards and was completed in 2012. The 3-level building with attic has the private garage next to the entrance and the Spanish patio/courtyard on the same floor. On the first floor are the 3 bedrooms with built in closets and their with bathroom en-suite. On the second floor is the spacious living area with log-fireplace, open plan kitchen with BOSCH equipment and separate dining corner and an open terrace with street view. On the top floor is the sun lounge terrace with awnings and a summer kitchen and beautiful views. This building is a ferroconcrete construction with massive brick walls with a high-class execution and has a high insulation in walls, double glazed windows, air conditioning, real oak parquet floor in bedrooms, oil-fired central heating with radiators, solar energy and much more which we will show you during the visit. Next to the main house with a possibility to make a connection between the two, is an

independent office of 60 m2 with kitchenette and bathroom designed in the same style and use of materials. A very unique house for a special client.



STYLE	AIRCONDITIONING	DISTANCE TO :	ORIENTATION
<ul style="list-style-type: none"> <li>Modern</li> <li>Contemporary</li> </ul>	<ul style="list-style-type: none"> <li>Livingroom</li> <li>Bedrooms</li> </ul>	Beach : 1 Km Airport: 50 Km Town center : 100 m	South west
FURNITURE	PARKING	MAIN LIVING AREA	FLOORING
<ul style="list-style-type: none"> <li>Not furnished</li> </ul>	Garage no Cars : 1	<ul style="list-style-type: none"> <li>Bathroom en-suite</li> </ul>	<ul style="list-style-type: none"> <li>Wooden floors</li> <li>Stone floors</li> </ul>
KITCHEN	GARDEN AND TERRACES	HEATING	ENERGETIC CERTIFIED
<ul style="list-style-type: none"> <li>Open kitchen</li> <li>Equipped kitchen</li> <li>Granite countertop</li> </ul>	<ul style="list-style-type: none"> <li>Covered terrace</li> <li>Open terrace</li> <li>Outdoor kitchen</li> </ul>	<ul style="list-style-type: none"> <li>Central diesel heating</li> <li>Radiators</li> <li>Fireplace wood</li> </ul>	<div> <div> <div>A</div> <div>B</div> <div>C</div> <div>D</div> <div>E</div> <div>F</div> <div>G</div> </div> <div>           In wardrobes            Reinforced door            Double glazed windows            Door bell with camera            Bedroom         </div> <div>IN PROGRESS</div> </div>

"OUR EXPERIENCE IS YOUR GUARANTEE"