



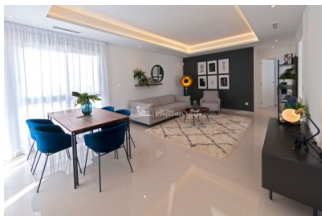
REF: # 10722

ROJALES (DONA PEPA)



INFO

PRICE:	617.090 €
PROPERTY TYPE:	Villa
CITY:	Rojales (Dona Pepa)
BEDROOMS:	3
Bathrooms:	2
Build (m2):	109
Plot (m2):	446
Terrace (m2):	137
Year:	
Floor:	1
Old price	-



DESCRIPTION

FANTASTIC MEDITERRANEAN STYLE VILLA IN DONA PEPA, CIUDAD QUESADA - with private pool and garden. Villa vedra, characterized by it's colonial Mediterranean style, contains 3 bedrooms and the possibility of building a 4th bedrooms with bathroom included. This style of property contains a pérgola in the solárium with beams that gives that Mediterranean touch. This 147m2 Villa consists of 3 bedrooms, 2 bathrooms, 37m2 terrace, 100m2 solarium and a large 446 m2 private garden Located in the urbanization Doña Pepa, equipped with all necessary services as shopping centers, medical center, pharmacies, golf courses, etc. Ciudad Quesada has a lot of green areas, parks with natural pine trees and spectacular views of the sea and the "Laguna de La Mata". It is a place where Europeans live all year round because of its developed infrastructure that provides all the amenities you would require. For golf lovers the closest courses are the La Marquesa Golf and the La Finca Golf Course in Algorfa just 10km drive away. Others nearby include Las Colinas Golf and Country Club, Vistabella Golf and Villamartin Golf to name a few. The Villamartin Golf Course is now one of

the most recognised golf courses on the Costa Blanca. There are shopping centers nearby, the Habaneras shopping centre in Torrevieja and only 20 minutes drive there is “La Zenia Boulevard” the largest shopping centre in the Alicante region. Alicante Airport is 35 mins (50km) drive away and Murcia (Corvera) Airport is 55 minutes (75km).



STYLE <ul style="list-style-type: none"> Mediterranean 	AIRCONDITIONING <ul style="list-style-type: none"> Central airconditioning 	DISTANCE TO : <div>Beach : 7 Km</div> <div>Airport: 50 Km</div> <div>Town center : 2 Km</div>	FURNITURE <ul style="list-style-type: none"> Not furnished
PARKING <div>Parking no Cars: 1</div>	MAIN LIVING AREA <ul style="list-style-type: none"> Bathroom en-suite 	FLOORING <ul style="list-style-type: none"> Tile floors Stone floors 	KITCHEN <ul style="list-style-type: none"> Open kitchen
GARDEN AND TERRACES <ul style="list-style-type: none"> Landscaped Private garden 	EXTRA <ul style="list-style-type: none"> Built in wardrobes Alarm Reinforced door Double glazed windows 	ENERGETIC CERTIFIED <div> <p>The image shows a vertical energy efficiency scale with seven horizontal bars labeled A through G. The bars are colored in a gradient from green at the top to red at the bottom. A green vertical bar on the right side of the scale is labeled 'IN PROGRESS' and extends to the level of bar A.</p> </div>	

"OUR EXPERIENCE IS YOUR GUARANTEE"